

How to Configure a Raspberry Pi for the first time

Once your Raspberry Pi is imaged, it is ready to go! We have a more detailed [tutorial](#) for imaging the Pi. Now we can move on to configuration when you turn on your Pi for the first time.

1. Power up the Raspberry Pi

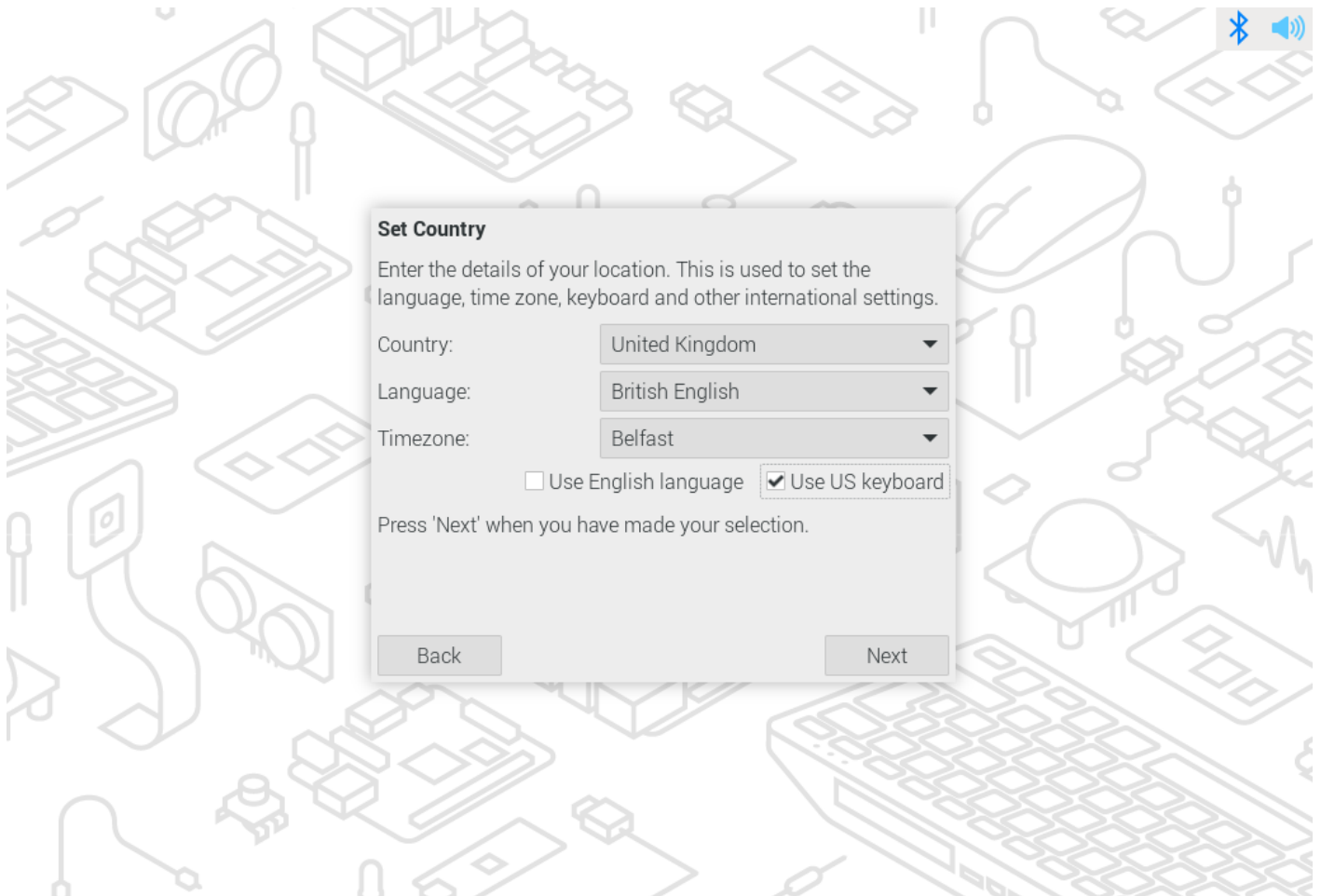
When you plug in the power supply and all other equipment you need, the Pi should start booting automatically. If your Raspberry Pi does not turn on within 5 minutes, check the [status LED](#), and try re-image the SD card.

If everything goes right, you should see this.



2. Locale

You need to set your country, language, time zone, and keyboard layout.



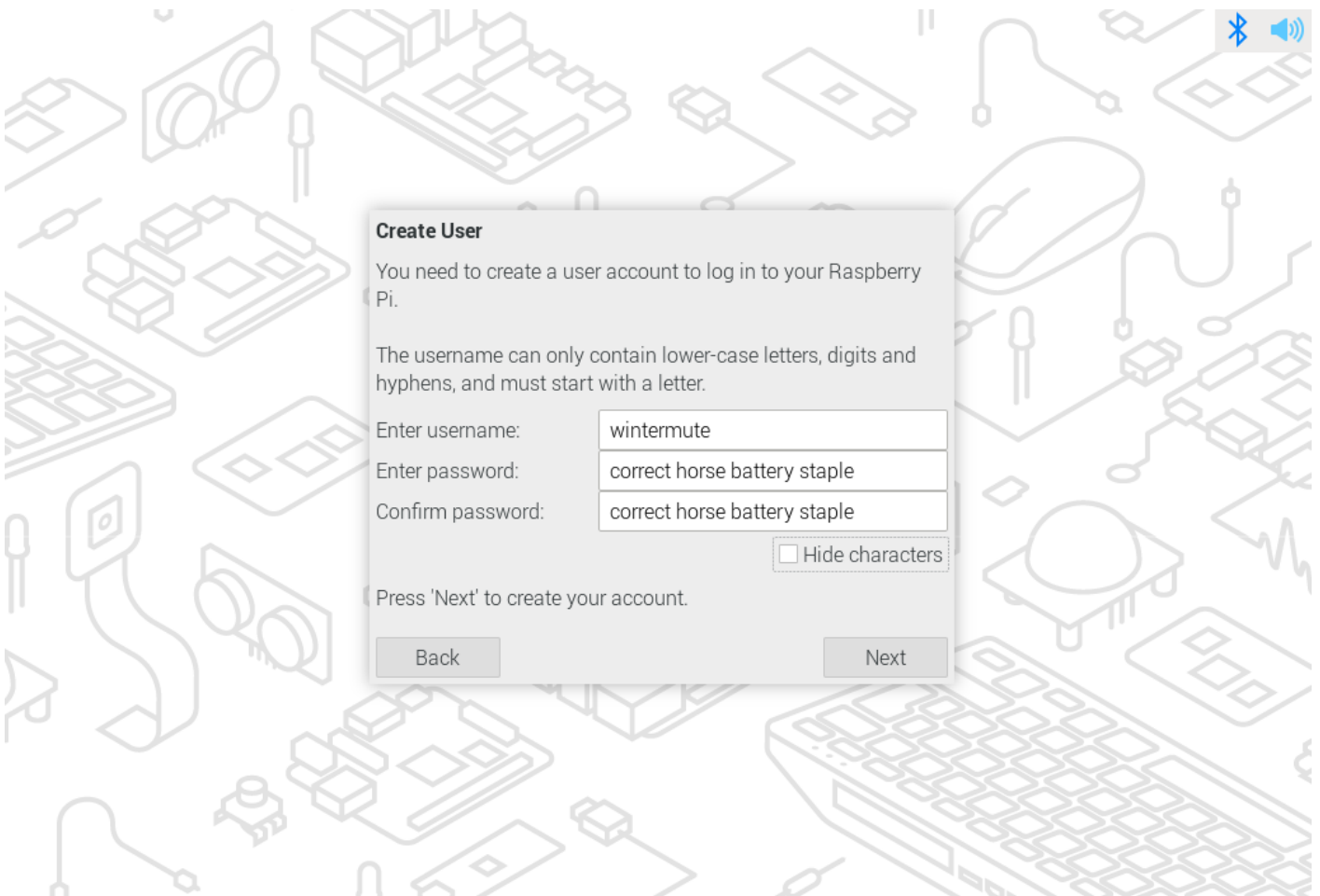
When you are setting up the keyboard, make sure the keyboard is plugged in. If you uncheck the `Use US keyboard`, it will set up the keyboard corresponding to your `Country`. The main difference between US and UK keyboards is the positions of `@`, `"`, `£` and `#`. There are many variants of keyboards, even just for US/UK keyboards. You can change that after the initial setup. Check this [tutorial](#) for changing the keyboard layout.





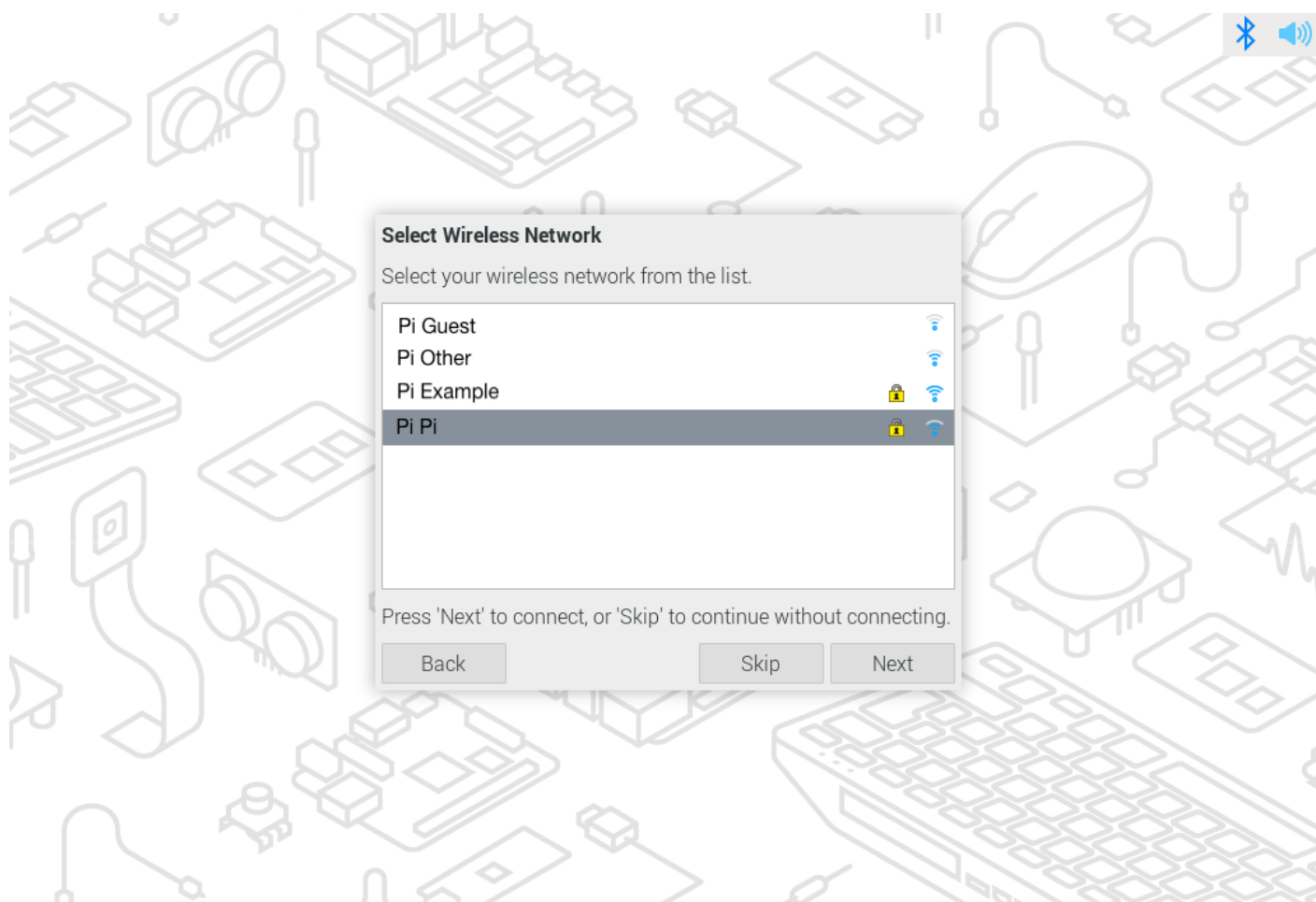
3. User

You can set your username and password here. For some older Raspberry Pi OS, it has a default username and password, which is username: [*pi*] ; password: [*raspberry*].



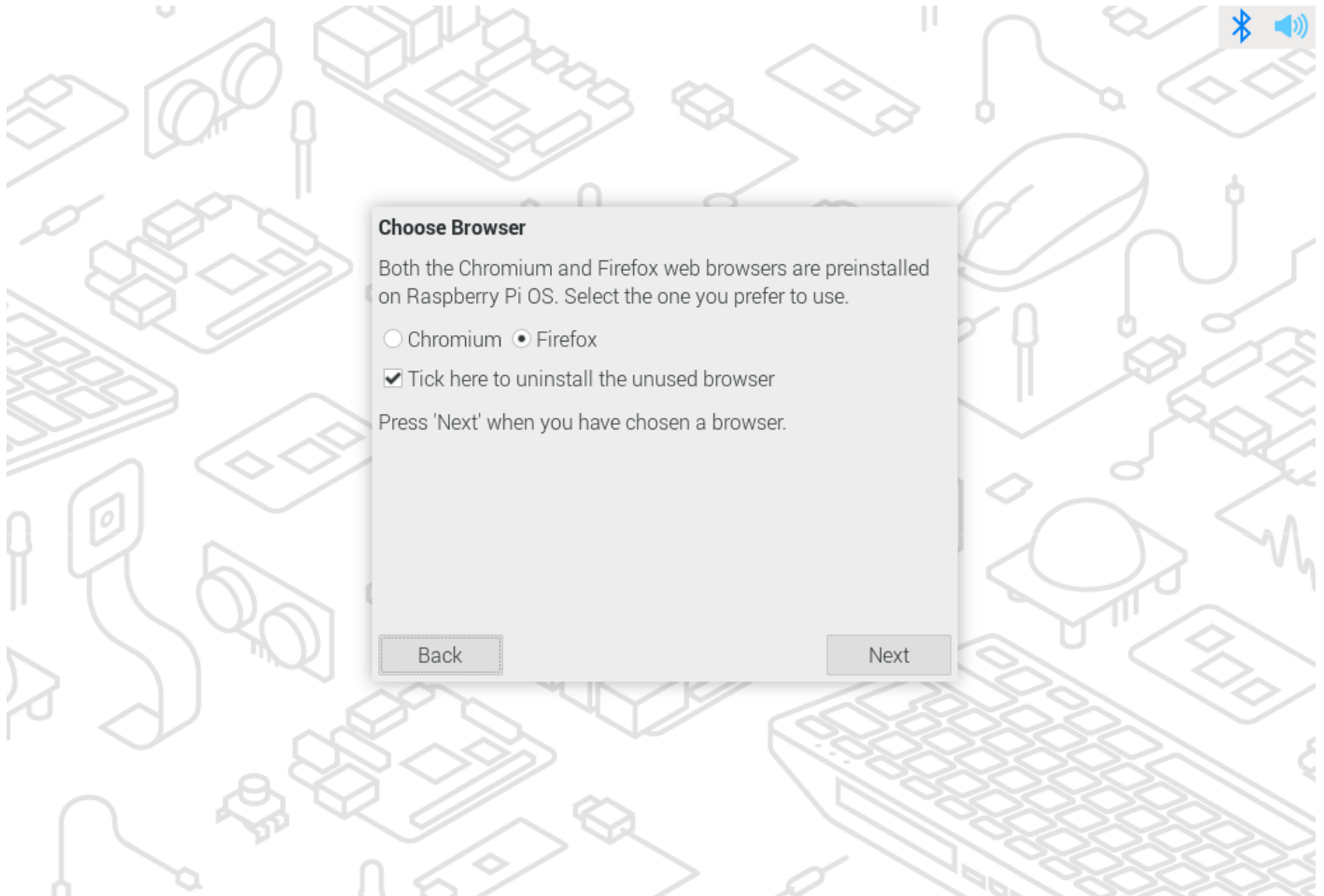
4. Wifi

You can log in to the WIFI as usual with SSID and password. For some networks, such as UAL wifi, you need to sign in with your UAL account, which will not work for most Pi. In that case, you will need an Ethernet cable to access to the internet.



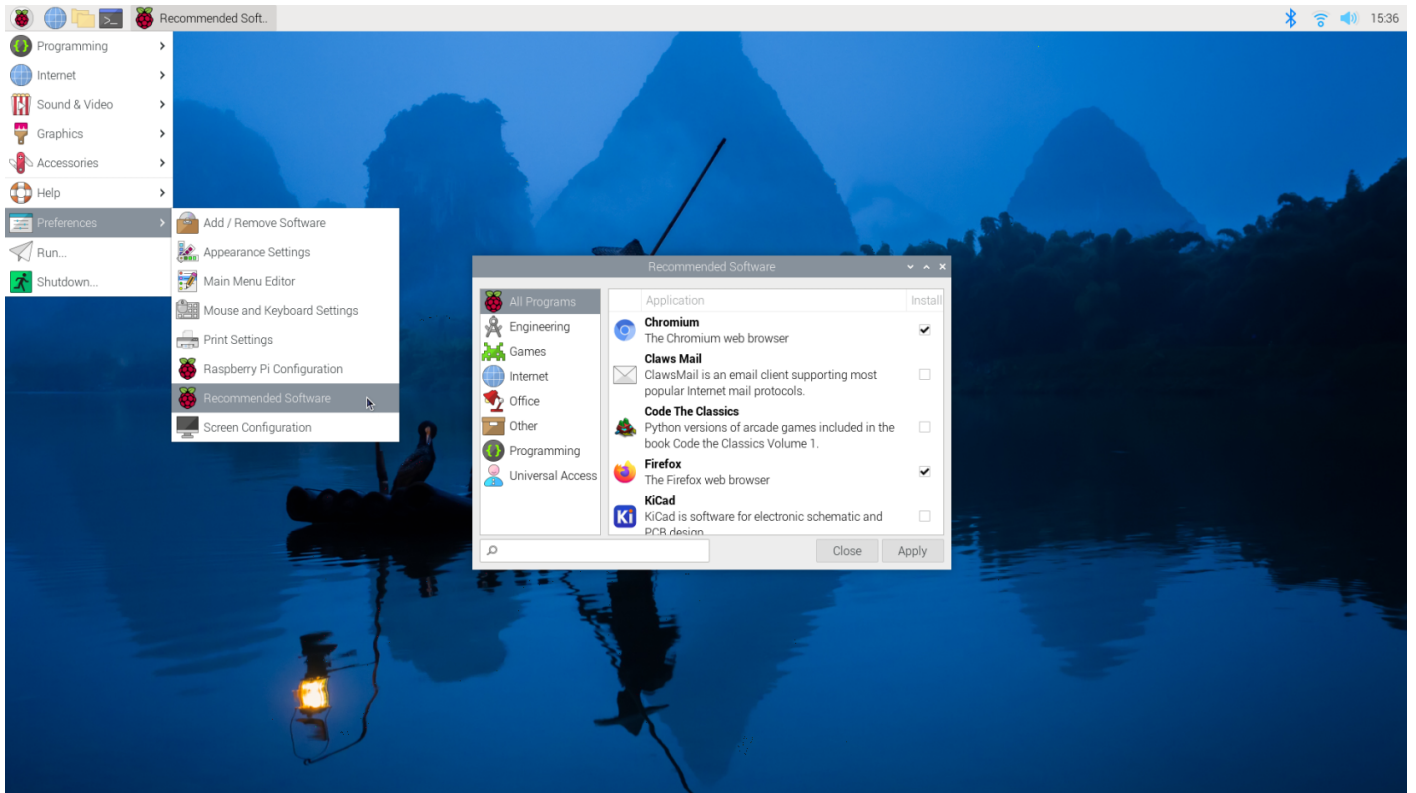
5. Brower

Google Chrome and Firefox are both preinstalled, you just need to choose one as your default browser. You can still access the other run from the start menu.



6. Recommended Software

Raspberry Pi comes with many essential applications pre-installed so you can start using them straight away, such as Thonny. You can go to [Start](#) - [Preference](#) - [Recommended Software](#), explore the list and download the ones you need.



Revision #2

Created 2 February 2024 11:31:01 by Joanne Leung

Updated 19 February 2024 12:47:43 by Joanne Leung